



NatureSpot

Recording the Wildlife of Leicestershire & Rutland

Identify 100 Species - Dragonflies & Damselflies

10 species you are likely to find in Leicestershire and Rutland

How easy is it to identify?

Easy



Care needed



Target species

Large Red Damselfly – *Pyrrhosoma nymphula* ●

ID: Red and black, with black legs. Females much darker.

Similar species: None likely.

Where to look: Ponds, lakes, rivers, canals. Apr-August.

About: First dragonfly species to appear in the year.

Recording: Photo required. Males are easier to ID.



Banded Demoiselle – *Calopteryx splendens* ●

ID: Male - blue with dark wing band. Female - metallic green without the wing band.

Similar species: Beautiful Demoiselle (male has all dark wings)

Where to look: Slow streams, rivers, canals. May-Sept.

About: Common along streams. Males are very territorial, chasing away any rivals.

Recording: Photo preferred.



Common Darter – *Sympetrum striolatum* ●

ID: Male is red/orange with a 'non-waisted' abdomen. Females are yellow/brown. Legs black/yellow. Wings often held forward.

Similar: Ruddy Darter males have a 'waisted' abdomen. All black legs.

Where to look: Perches on fences & wires. Active to Oct/Nov.

About: Usually the last dragonfly to remain active, even into late Autumn. Often easily approached as it perches and usually returns to the same spot if disturbed.

Recording: Photo required.



Other common Leicestershire dragonflies and damselflies to check out:

Ruddy Darter, Four-spotted Chaser, Red-eyed Damselfly, Emerald Damselfly, Azure Damselfly

Common Blue Damselfly – *Enallagma cyathigerum* ●

ID: Males blue/black. Females typically brown. Both have broad stripes on the thorax (arrowed) as wide as the black line beneath it. May – Aug.

Similar species: Azure Damselfly (thin stripes on thorax).

Where to look: Ponds, pools, canals. Sheltered hedgerows.

About: The most widespread and possibly most common damselfly species.

Recording: Photo required. Males are easier to ID.



To find out more about the [100 Species Challenge](#), how to submit records of your sightings and lots more about the wildlife of Leicestershire and Rutland, visit www.naturespot.org.uk.

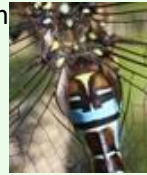
Brown Hawker – *Aeshna grandis* ●

ID: Large. Brown body + brown-tinted wings. Jun-Oct.
Similar species: None (it is the only species with brown wings).
Where to look: Most large water bodies, slow rivers.
About: The most common and widely distributed hawkler in the area.
Recording: Photo preferred.



Migrant Hawker – *Aeshna mixta* ●

ID: Medium. Brown/black with blue spots – dark in flight. Yellow 'golf T' at top of the abdomen. July-Nov.
Similar species: Common Hawker (rare & lacks the golf T).
Where to look: Well vegetated water bodies. Hunts away from water – eg. along woodland/hedge edges.
About: Prior to the 1980's it was only a migrant visitor to Britain but now it is a common breeding species.
Recording: Photo required.



Emperor Dragonfly – *Anax imperator* ●

ID: Large. Light blue abdomen + apple green thorax. Female has a greener abdomen. Jun-Aug.
Similar species: None.
Where to look: Large water bodies with lots of vegetation.
About: Europe's largest dragonfly. Has become much more common in Leicestershire and Rutland during recent decades.
Recording: Photo required.



Southern Hawker – *Aeshna cyanea* ●

ID: Large. Black with green + blue spots. Large yellow 'headlight' spots on the thorax (arrowed). July-Oct.
Similar species: None have the large yellow thoracic spots.
Where to look: Smaller water bodies.
About: Its preference for well vegetated small ponds as egg laying sites mean it often breeds in garden ponds.
Recording: Photo required.



Blue-tailed Damselfly – *Ischnura elegans* ●

ID: Males black with blue tip. Females all dark abdomen, thorax brown, lilac, pink.
Similar species: [Red-eyed Damselfly](#) (red eyes)
Where to look: Ponds, pools, canals.
About: A common local species. Larvae have a tolerance for polluted water so it breeds in places shunned by other species.
Recording: Photo required. Males are easier to ID.



Broad-bodied Chaser – *Libellula depressa* ●

ID: Female - yellow, male - powder blue. May-Aug.
Similar species: Four-spotted Chaser (has a spot on each wing)
Where to look: Shallow, still ponds.
About: It favours new ponds as breeding sites, before they become well-vegetated, so is often seen at freshly filled garden ponds.
Recording: Photo required.

